

FREE

The New Forest Essential Guide

to the National Park 2018

Maps
Events guide
Places to explore
Walking & cycling

The New Forest Essential Guide is brought to you by:

WIN
a £300 Forest
Holidays
gift voucher



Forestry Commission
England



Welcome to our new look 2018 edition of 'The New Forest Essential Guide'. We hope you'll enjoy the more compact size, still bursting with information about this very special place.

The New Forest is a world capital for wildlife with a huge diversity of rare plants and animals – one of the reasons why it was made a National Park in 2005. A place of outstanding natural beauty, the unique landscape is shaped by grazing ponies, cattle and pigs that roam freely.

One of the last places in southern England to offer a sense of wildness and tranquillity, it's a wonderful area to explore. Indeed William the Conqueror, who set aside the 'New Forest' for hunting more than 900 years ago, would probably recognise much of it today.

Whether you fancy an active day out or just want to while away a few peaceful hours enjoying its beauty, a visit is one forever remembered. And you can give back to the forest too during your visit. Whether you choose to donate to

Love the Forest, buy local New Forest Marque produce and of course by giving way to our treasured grazing animals by driving more slowly, every little bit helps.

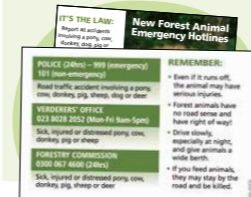
Find out about more sustainable ways to get around the forest using one of the New Forest Tour routes, or simply join an organised event to learn more about the wildlife, history and culture of the National Park.

Find out more at:
forestry.gov.uk/newforest
newforestnpa.gov.uk/aboutus
 @newforestnpa
 newforestnpa

Architects of the forest

Commoning is a form of farming which allows ponies, cattle, pigs, donkeys and, in certain areas, sheep to graze and forage on unfenced common land.

Each pony in the National Park is owned by a 'commoner' – someone whose property has common rights allowing them to turn out ponies to graze on the forest. Over 10,000 ponies and cattle roam free in the National Park and it is rarely possible to travel more than a few miles without coming across these famous forest residents.



Animal emergency hotline cards are available from garages and Local Information Points across the New Forest.



Feeding ponies human food, or even things like carrots, causes serious issues in the New Forest. Some ponies and donkeys develop an unhealthy craving for human food and become aggressive with people who, quite rightly, try to keep their picnics to themselves.

The ponies are sometimes described as 'the architects of the forest' because their grazing creates much of what people know and love as the New Forest – the close-cropped 'lawns' between the wooded areas and the distinctive 'browse line' on the trees marking the highest point ponies can reach.



Visitors are asked **not to feed or touch the ponies** as they may look friendly, but they are **unpredictable and can bite and kick, especially mares with foals.**

There is plenty of lush grass for ponies to eat in the spring and summer and in the winter months they are well-adapted to eating prickly fare such as gorse, brambles and holly. Human food also gives the ponies colic (bad stomach ache) which is very painful.

Don't feed the ponies, it attracts them to car parks and roads, where they are at serious risk of accidents. Sadly dozens of ponies are killed or injured on the roads of the New Forest each year.

Please help reduce animal accidents in the New Forest by driving extra carefully in the dark and **#add3minutes** to your journey. newforestnpa.gov.uk/add3minutes

Our Past, Our Future

Our Past, Our Future is a Heritage Lottery Fund scheme led by the New Forest National Park Authority in partnership with 10 other organisations.

The five-year scheme is in its third year and has seen some excellent outcomes,

from improving wildlife corridors and restoring woodlands, to getting local communities involved in art and creating a database of historical documents about the New Forest.

For more information, visit: newforestnpa.gov.uk/landscapepartnership



10,000 trees (of the planned 20,000) have been planted in the first 2 years of the scheme at the National Trust's Foxbury site thanks to help from volunteers.



242 people were trained in 24 rural skills courses such as cob building.



335 volunteers helped pull up non-native invasive plants which choke waterways.



Walking in the New Forest

Follow our waymarked walks and trails.

The following trails are marked on the ground by wooden marker posts with coloured bands. An overview map of each route is displayed at the start point in the car park. All routes are circular and will bring you back to your starting point. The numbers refer to map locations on centre pages.



Miles of waymarked trails to explore!

2 From Bolderwood car park:

Deer Watch Trail 0.75km/0.5 miles

A short stroll leading you to a deer viewing platform overlooking fields where wild herds of fallow deer are frequently seen. The path is a moderately smooth, gravelled surface with gentle slopes and benches along the way. The trail is accessed by a gate which has a low catch.

Jubilee Grove Trail 1.5km/1 mile

Including the deer fields, this meandering route leads you past some majestic trees, the oldest of which date back to 1860. Benches from which to admire their beauty can be found along the way. The path is a moderately smooth, gravelled surface with two short 'but fairly steep' slopes and frequent resting places. The trail is accessed via a gate which has a low catch.

Radnor Trail 3km/2 miles

A longer route which takes you into the heart of the forest and across the Bratley Water stream. Benches and picnic benches are located along the trail. The path is a moderately smooth, gravelled surface with two short 'but fairly steep' slopes and frequent resting places. The trail is accessed via a gate which has a low catch.

6 From Blackwater or Brockhill car parks:

Tall Trees Trail 2.5km/1.5 miles

Follow the marker posts and you will be guided along a shady path beneath mighty Douglas firs and redwoods that were planted during the reign of Queen Victoria. The path has a fairly smooth, gravelled surface. The trail is flat with frequent resting places and no gates.

Blackwater Arboretum Trail 0.75km/0.5 miles

A circular route which leads you past tree species from around the world. By following the unique panels you can use your senses to discover the secrets that these trees hold. Benches are located along the walk. The path has a fairly smooth, gravelled surface with one very gentle slope.

7 From Whitefield Moor or Puttles Bridge car parks:

Ober Water Trails 1.5km/1 mile (red trail) 2.5km/1.5 miles (yellow trail)

Two circular routes follow the Ober Water midway between its source and the sea. Close to this meandering stream is the open grassy expanse of Whitefield Moor. The paths are moderately smooth, gravelled surfaces and compacted grassy ground with some gentle slopes and a few resting places. This trail can be muddy after wet weather.

3 Reptile Centre car park:

Reptile Trail 2km/1.5 miles

Enjoy a circular walk through the woods. The trail mainly follows a fairly smooth, gravelled surface.

8 Wilverley car parks:

Wilverley Wander 4.2km/2.5 miles

A longer and more informal trail which winds through this diverse and working woodland. The paths are moderately smooth, gravelled surfaces with some short, steep slopes. Please note that part of this trail is on a cycle route.

5 Knightwood car park:

Knightwood Oak Less than 0.25 miles

A short stroll to one of the most famous trees in the New Forest. Believed to have been planted before 1600, this tree is still going strong and is a spectacular example of the ancient practice of pollarding. Benches are located throughout. The path has a fairly smooth, gravelled surface.



New Forest Walking Festival 2018

13 to 28 October

This autumn join local experts for 80 fascinating New Forest walks at the annual walking festival, now in its sixth year!

Walkers of all ages and interests can go behind the scenes and discover more about the New Forest on wildlife walks, history hikes and family strolls.

Booking is essential. Browse the walks and book from August onwards at:
newforestnpa.gov.uk/walkingfestival

Learn more about the special qualities of the New Forest while enjoying a healthy stroll.

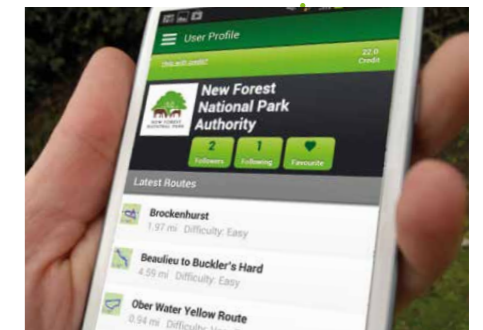
One-stop-shop for New Forest walks and bike rides

Explore the woods, heathland and coast of the New Forest National Park on 50 easy to follow routes.

The online New Forest routes finder allows you to search by distance, location or even whether there is a pub near the route! Once you find the route for you just print off the directions or download the trails to your smartphone for free.

The trails have step-by-step instructions as well as videos and images of some of the walk's highlights.

Browse and download routes now at:
newforestnpa.gov.uk/routes



New for this year: Hundreds of miles of New Forest tracks have been photographed and can be explored at maps.google.co.uk



We've got the trails, are you ready to ride?

Explore the National Park on two wheels, with more than 100 miles of waymarked family-friendly cycle routes, much of it off the public highway and traffic-free.

The network is easily accessible from railway stations at Ashurst,

Brockenhurst and Sway and links the main New Forest villages. There are plenty of places to hire bikes before and during your stay.

For all the best trails visit: newforestnpa.gov.uk/routes

Follow the New Forest Cycle Code

The New Forest is a working forest, with forestry, farming and equestrian activity on its narrow roads and tracks. Ponies, cattle and other animals are free to roam the forest and most of its roads.

Be aware that animals are easily startled and may suddenly move into your path.

Please follow both the Highway Code and the **New Forest Cycling Code** which is supported by cycling groups and local organisations. newforestnpa.gov.uk/cycling

If you are cycling in an organised event, follow the additional instructions to minimise your impact.

Adventure cycling

For more adventurous cyclists, there are purpose-built mountain bike skills circuits at **Moors Valley Country Park**, Ringwood. Here you will find a network of forest road graded trails, as well as blue graded single track. A cycle map is available from the visitor centre onsite.



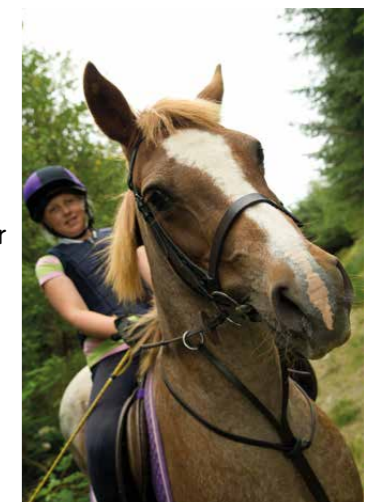
Off-road cycling in the New Forest is permitted only on certain routes. Please take a look at our cycling routes for more information.

Horse riding in the New Forest

The New Forest is a wonderful place to go horse riding. There are mature woods, shady streams, dappled glades and beautiful open heathland – what better way to see the landscape than from the back of a horse? You can walk quietly through magnificent oak woods, past tall conifers, or strike across the heathland enjoying the views and the wild open country.

Horse riders have always enjoyed open access in the forest, which is well furnished with suitable tracks.

When leaving Forestry Commission land, remember to use the bridleways. On private land, riders must keep to Public Rights of Way. These are shown on Ordnance Survey maps, and are usually indicated by fingerposts and/or blue arrows or dots.



The New Forest Cycle Trails

Pick me up for £1

Cycle code & map

Grab a **cycle trail map** before heading out on your adventure. It shows both off-road and road-based cycle networks across the New Forest, plus details of bike hire outlets.

Available at outlets across the New Forest National Park, including local information points.



See more of the forest

Sit back, relax and experience more of the New Forest National Park. Soak up the sun this summer on the open-top New Forest Tour, or find out the best places to visit from the friendly Travel Concierge.



New Forest Tour

The New Forest Tour is the perfect excuse to leave your car at home, jump on board and explore more of the New Forest National Park.

The tour offers unrivalled treetop views of free-roaming ponies, ancient forests and picturesque villages. There are three beautiful routes to choose from – red, green and blue – and you can hop on and off where you like and switch routes – all on the same ticket. You can even bring your bikes (carried free) and listen to audio commentary that brings the history and characters of the New Forest to life.

The perks don't stop there, as you can enjoy a free ferry ride from Southampton to Hythe, as well as great discounts at attractions including Exbury Gardens, New Forest Wildlife Park and Beaulieu National Motor Museum.

The tour runs hourly, seven days a week from **7 July to 9 September** (see map on centre pages for routes).

For more information and online discount visit: thenewforesttour.info

[@NewForestTour](https://twitter.com/NewForestTour)
[NewForestTour](https://www.facebook.com/NewForestTour)

Tips from the Travel Concierge

If you are looking for ideas on how to make the most of your visit to the New Forest National Park then look no further.

The friendly Travel Concierge team, mainly based at Brockenhurst railway station and The New Forest Centre, Lyndhurst, will welcome you to their pedal-powered mobile unit full of information about car-free experiences and the best places to visit.

Stop by and say hello from 7 July to 9 September.

For more information visit: newforestmpa.gov.uk/travel_concierge

[@NewForestTravel](https://twitter.com/NewForestTravel)
[NewForestTravel](https://www.facebook.com/NewForestTravel)



Food that hits the Marque



If you're looking for New Forest food, drink and crafts then keep an eye out for the New Forest Marque as you shop and eat in the New Forest.

The New Forest Marque represents more than 140 local businesses who are passionate about their local products. Buying a Marque

product means you know you are getting truly local New Forest fare and supporting the local economy.

Look out for the blue symbol when visiting and you'll know you're eating local food or buying gifts made locally using local produce.

For more information on where to stay and what's happening in the New Forest visit:

thenewforest.co.uk
[@MyNewForest](https://twitter.com/MyNewForest)
[MyNewForest](https://www.facebook.com/MyNewForest)



newforestmarque.co.uk
[@NewForestMarque](https://twitter.com/NewForestMarque)
[new-forest-marque](https://www.facebook.com/new-forest-marque)

A Date with Nature

1 April to 3 September

The New Forest is home to all six cold-blooded UK native reptile species including the rare natterjack toad and all are available to see at the New Forest Reptile Centre, near Lyndhurst.

While walking around the special reptile 'pods' you can search for these elusive lizards, snakes, frogs and toads and also watch the live camera footage of birds busy feeding.

The Date with Nature project, run by the Forestry Commission, New Forest National Park Authority, RSPB and Carnyx Wild gives you the opportunity to watch live footage from the nest of a bird of prey. Follow the lives of these birds from egg hatching to sibling rivalry to their first flight. Meet and chat to our friendly volunteers who are there to answer your wildlife questions.



Discover the New Forest

While you're visiting the New Forest, why not check out nearby Moors Valley Country Park?

Explore waymarked footpaths and cycle routes, hire a bike or bring your own. For a more leisurely journey take a trip on the narrow-gauge steam train. Children will love the adventure play areas and the 'Play Trail' with its huge wooden play structures.

If you'd rather live life more adventurously why not try Go Ape, the UK's number one forest adventure? With challenges for adults and children, plus the option to hire a Forest Segway, there really is something for everyone. And, when you're feeling hungry you can enjoy delicious food in Seasons restaurant.

Moors Valley is open all year round, with a full programme of events for adults and children. Disabled access and facilities are provided including wheelchair and mobility scooter hire.

moors-valley.co.uk
officialmoorsvalley

New for 2018

- Hawk House play structure
- The Highway Rat trail
- Gruffalo sculptures



Finding out more...

New Forest Centre, Lyndhurst. Here in the heart of the New Forest, you'll find a fascinating museum, gift shop and gallery. newforestcentre.org.uk

The National Park Explorer mobile information unit pops up everywhere, especially in the summer months. A National Park Ranger can answer your questions. newforestnpa.gov.uk/visiting

New Forest Reptile Centre, near Lyndhurst. See page 9 for details.

Bolderwood Information Unit in the New Forest is staffed by Forestry Commission Rangers and volunteers frequently throughout the spring and summer seasons with maps, information, activities.



The New Forest's Free tap water refill service, across the forest. Download the Refill app, bring your own water bottle, look out for the window stickers and get a free tap water refill. refill.org.uk/newforest



Local information points

- Beaulieu New Forest Activities Booking Centre: 01590 612377
- Burley Shappen Stores: 01425 402205
- Brockenhurst Cyclexperience: 01590 624808
- Hythe Herald Publishing: 02380 845700
- Landford Landford Village Stores: 01794 390242
- Milford-on-Sea The Village News: 01590 645595
- Minstead Minstead Village Shop: 02380 813134
- Sway Deli and Coffee Shop: 01590 683392
- Woodgreen Community Shop and Post Office: 01725 512467

Key to map

- | | | |
|--------------------|--|-------------------------------|
| Information | Play area | National Park area |
| Local information | Walking trails | Car parking |
| Campsite | Barbecue | New Forest Tour* (see page 8) |
| Wildlife area | Barbecue (Booking required: 0300 067 4601) | New Forest Tour* |
| Castle | Cycle network | New Forest Tour* |
| Toilets | Fishing (by permit) | |
| Accessible toilets | Fishing | |
| Cafe | | |
| Picnic area | | |

* The tour runs hourly, seven days a week, from 7 July - 9 September.

For a map of all Forestry Commission car parks visit: forestry.gov.uk/newforest

Not to scale: This map is a representation of the New Forest National Park area and is not intended to be used as a sole means of navigation. Please consult relevant Ordnance Survey maps or visitor guides.

Caring for the forest

How to enjoy and care for the New Forest National Park

Ponies, donkeys, cattle, pigs & sheep

For their safety and your own please leave the animals alone - although owned and cared for by local people called commoners, they are unpredictable and best treated as wild. Please don't feed or pet them; there is plenty of natural food and it's best that they don't come to rely on people's attention. They may look friendly but they can bite and kick, especially ponies with foals.

Dogs

The New Forest is great for dogs but to minimise disturbance to wildlife, livestock and other people, please keep your dogs close by you and visible at all times - if necessary use a lead. Pick up after your dog, especially around car parks, on paths and where people play or picnic.

Birds

To help ground-nesting birds rear their young safely, keep yourself, dogs and horses on the main tracks from the beginning of March to the end of July.

Litter

Your food and litter could harm the ponies and donkeys. Please take your litter home if bins are full.

Barbeques & fires

To reduce the risk of damaging wildfires, campfires are not allowed without the landowner's permission. Disposable BBQs are welcome at Bolderwood, Blackwater and Wilverley where stands and water are available. Raised non-disposable BBQs are allowed on the hard-standing areas of car parks, providing water is available. You can hire fixed stand party-sized BBQs from the Forestry Commission (call 0300 067 4601) and from Hampshire County Council at Lepe Country Park (hants.gov.uk/lepe or call 023 8089 9108 in advance).

Cycling

Cycling is allowed only on the waymarked tracks and other designated routes. When approaching people and animals, please call out a warning and pass slowly and wide. Try to leave gaps for overtaking vehicles and never ride more than two abreast. Keep to a safe speed, wear bright colours to be visible and always use lights in the dark.

Fungi

Please leave fungi for other people to enjoy. Fungi are essential to the New Forest's internationally protected ecosystem. Foray leaders must apply for permission for educational excursions from the Forestry Commission in advance. If you suspect or see commercial picking please call the Forestry Commission on 0300 067 4600.

Camping

There are 10 campsites in the New Forest, run by Camping in the Forest, as well as a number of private sites. Please note that camping in the wild and overnight parking is not allowed in the New Forest.

Horse riding

Horse riders have open access to the New Forest, but to reduce damage to the ground please use tracks when it's wet.

Ticks

Check your children, dog and yourself for ticks when you get back - they can lead to Lyme disease.

Driving

The speed limits on unfenced roads greatly reduce the number of accidents involving animals. Slow down and give walkers, cyclists, horse-riders and animals a wide berth. Be especially careful at night.

Parking

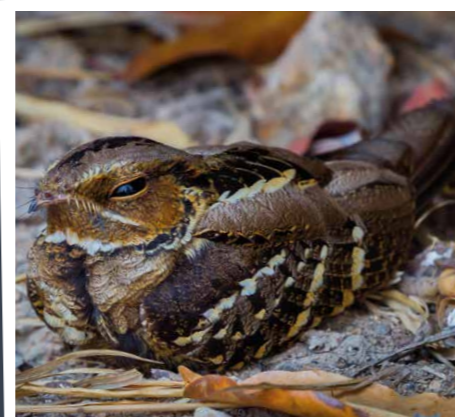
Please park only in designated car parks, not on a verge or in gateways. Lock your car, taking any valuables with you and leave Forestry Commission car parks by dusk.

Unidentified objects

Areas of the New Forest were used to test bombs in World War I and II. Please keep away from objects that might be dangerous and notify the police immediately on 999.

Working forest

Stay safe by obeying warning signs and keeping away from work sites and vehicles.



Meet your New Forest Rangers

Both the **Forestry Commission** and **National Park Authority** employ rangers, who you'll often meet out and about in the New Forest. Here, you'll meet some of the team as they answer some of the most commonly asked questions by visitors to the New Forest.

If you have a question or would like to speak to one of the team, they can be contacted via the details at the bottom of the page.



Forestry Commission ranger team



New Forest National Park Authority ranger team



How can I get involved in conservation work in the New Forest?

There are many conservation groups which work in and around the New Forest. If you visit newforestnpa.gov.uk/ volunteering you can see all the volunteer groups and find one that interests you on the days you are free to join in.

Craig Daters,
New Forest National Park Authority North Ranger

What are the most popular things to do for free in the New Forest?

The forest is full of walking and cycling trails of all distances, some of which can be started from Forestry Commission car parks. There is also over 26 miles of coastline to be explored. If you want to head to the beach while visiting the New Forest, Lepe Country Park is perfect for walks, lunch and learning about coastal wildlife and history.

Chris Marshall, New Forest National Park Authority Coastal Ranger



The New Forest isn't all tree-covered, why are some areas very open?

Much of the New Forest is internationally important mire (bog) and heathland habitat. The Forestry Commission actively manages these areas to remove scrub and maintain a mosaic of different ages of heather. Some rare species live in these habitats.

Amy Howells, South Walk Ranger, Forestry Commission



Forestry Commission Keepers

The Forestry Commission employs a team of Keepers (Wildlife Rangers). The earliest mention of Keepers in the New

Forest, dates right back to the Doomsday Book (1086). Today, deer management remains a key part of the Keeper's role, along with many other activities central to protecting the forest and keeping it in good order.

Ranger Richard Daponte and Keeper Lee Knight, Forestry Commission

Forestry Commission rangers

0300 067 4601
enquiries.southern@forestry.gsi.gov.uk
Forestry Commission, The Queen's House,
Lyndhurst, Hampshire, SO43 7NH

New Forest National Park Authority rangers

01590 646 600
rangers@newforestnpa.gov.uk
New Forest National Park Authority,
Lyminster Town Hall, Avenue Road, Lyminster SO41 9ZG

Spend the night in a forest



Enjoy the peace and quiet of the woods for longer with Camping in the Forest.

Camping in the Forest offers a place where you can disconnect from everyday life and the stresses of modern day living. The forest allows you to break free and reconnect with each other, with nature, but most importantly with yourself and with a simpler way of life - leading to a

calmer state of mind and a true sense of peace. At Camping in the Forest, the connection with nature is vital to the experience. We are conscious of the wildlife that calls this area home, aware of the measures in place to protect them and their surroundings, and we act on that where necessary.

All of our 15 campsites within the UK are set amongst idyllic woodlands on Forestry Commission land in National

Park locations, including 10 within the New Forest. So why not try one out this year?

Find the right campsite for you online at campingintheforest.co.uk - you can book your holiday here too or by calling **024 7642 3008**.



A Forest Holidays cabin break is whatever you want it to be.

Our **Blackwood Forest** location in Hampshire offers the chance to holiday in one of **60 luxury woodland cabins**, hidden deep in a **270 hectare beech forest**. Leave the world behind as you pass beneath the towering Blackwood

Forest beeches and enjoy the unique Forest Holidays blend of nature's wonder and life's little luxuries. The Forest Holidays experience is rooted in the natural world of the forest and you will instantly feel the embrace of this abiding yet ever-changing backdrop. Whether you're a family, a couple or a group of friends, enjoy the freedom. Relax and reconnect or fill your days with exhilarating outdoor activities.

Save 10% at Forest Holidays

Our friends at Forest Holidays have given us a **10% saving** at Forest Holidays in Blackwood Forest. Enter **NEWFOREST** to save 10% at forestholidays.co.uk when you book a holiday by 31 December 2018. (Terms and conditions apply*)

For your chance to win a **£300 Forest Holidays gift voucher** towards your next forest break just tell us: **How many Forest Holidays sites are there currently across England?**

WIN
a £300 Forest Holidays gift voucher

Email your answer and contact email address to: enquiries.southern@forestry.gsi.gov.uk
Closing date 31 October 2018. Must be booked and taken by 31 January 2019 (excluding bank holidays and school holidays), and is subject to availability. Your personal information will only be held to enable us to notify the winner and will be deleted after the closing date. The Forestry Commission is a data controller under the Data Protection Act 1998. Our privacy policy is on our website www.forestry.gov.uk



What's on? 2018

New Forest Centre led events

Forestry Commission events

New Forest National Park Authority events

Exhibitions in the New Forest Gallery

Gallery open daily 10am to 4.30pm from 1 April to 29 October (10am-3.30pm at all other times).

Maps: The New Forest Unfolded
21 Jan - 15 Apr, open daily
Discover the biography of the New Forest and its people through maps chosen from the Christopher Tower Reference Library.

Ancient and Remarkable Trees
21 Apr - 8 Jul, open daily
A selection of images of trees in the New Forest by photographer David Russell.

The 6th Annual New Forest Open Art Exhibition
14 Jul - 8 Sep, open daily
An exhibition showcasing the best of the creative New Forest.



Barry Peckham - Retrospective
15 Sep - 28 Oct, open daily
A collection of oil paintings by renowned local artist Barry Peckham.

Commoning Voices Exhibition
3 Nov - 6 Jan, open daily
A thought-provoking exhibition which reveals, through audio, video, artefacts and beautiful photographs from the past and present, the intimate relationships between commoners, their animals and the forest.

New Forest Centre, Lyndhurst, SO43 7NY

FEBRUARY

Christopher Tower Library Open Day
Sat 24 Feb, 10am - 4.30pm, New Forest Centre, Lyndhurst, SO43 7NY

Run in conjunction with our exhibition, this open day will showcase highlights from our wonderful collection of maps as well as supporting material.

MARCH

An Evening with Birdman Martin Ballam
Fri 9 Mar, 7.30pm (doors open 7pm), New Forest Centre, Lyndhurst, SO43 7NY

Join Martin Ballam from Xtreme Falconry and hear about his work with birds of prey. Martin will also be bringing along some of his feathered friends for you to meet.
£6 per person (£4 for members).

The Forester's Guide to Trees and Timber
Sun 11 Mar, 10am - 12pm, Standing Hat car park, SU314036
A chance to learn about the working forest, guided by our local Forester.
£10 per person. 12 year +. 3 miles. No dogs. Booking essential. Book: forestry.gov.uk/newforestevents
Enquiries: 0300 067 4601

Discovery trail at Bolderwood
Fri 30 Mar - Sun 15 Apr, 10.30am - 3.30pm, Bolderwood, SU242086
Experience the seasons of the forest, on our discovery trail. Self-guided trail through the woods with activities for all the family.
Free trail. Small charge may apply for activity pack. Suitable for all ages. Dogs welcome on leads. No booking required. Enquiries: 0300 067 4601

Easter Craft Children's Workshops
Sat 31 Mar, 10am - 2pm, New Forest Centre, Lyndhurst, SO43 7NY

Have an 'egg-citing' time with our children's Easter crafts and make lots of fun things to take home.
Six activities for £5 if booked in advance by 26 March or £1.50 per activity on the day.

APRIL

Wild Wednesdays
Wed 4 Apr, 10.30am - 4pm, Reptile Centre, SU271071

Enjoy a date with nature at the Reptile Centre, with fun activities for the whole family. Quiz trail and making activities for children. Come and see the "live" video of birds on their nests as well as the reptiles and amphibians.
Free. Suitable for all. Dogs welcome on leads. No booking required. Enquiries: 0300 067 4601

Easter Eggstaviganza
Tue 10 Apr, 11am - 3pm, Bolderwood, SU242086

Meet our rangers, help spot the early signs of spring and celebrate our feathered friends. Take part in our Easter Trail at Bolderwood and if you manage to solve all the clues you can claim a prize!
£3 per person. Suitable for all ages. Dogs welcome on leads. No booking required. Enquiries: 0300 067 4601

Wild Play Day at the Beach
Wed 11 Apr, drop in between 10am - 3pm, Hurst Spit, Milford on Sea, SO41 0PY

Discover fun ways to explore, play and get creative in the outdoors. Come and try crabbing, beach art, seashore scavenging and much more. Wear some old, warm clothes and don't forget your wellies!
Suggested donation £1/child. Parking charges apply. Suitable for all (children must be accompanied by an adult). No booking required. Enquiries: 01590 646600

Wild Wednesdays
Wed 11 Apr, 10.30am - 4pm, Reptile Centre, SU271071
See Wed 4 Apr for details.

Wild about ponies
Thu 12 Apr, 1pm - 2pm, Bolton's Bench, SU303081

Meet a New Forest ranger and learn about New Forest ponies and other livestock which live in the forest. Come along to a fun, free information session and learn all the answers to your questions about the four-legged icons of the New Forest.
Free. Suitable for all. 1 mile. Dogs welcome on leads. No booking required. Enquiries: 0300 067 4601

Family Discovery Days

Learn about the New Forest and have fun with our family-friendly activities. No need to book, just drop in between 10am and 3pm - different activities each day. (Museum entry is free, donation per craft activity.)

| | | | |
|--------|--------|--------|--------|
| 13 Feb | 29 May | 16 Aug | 30 Aug |
| 15 Feb | 31 May | 21 Aug | 23 Oct |
| 3 Apr | 31 Jul | 23 Aug | 25 Oct |
| 5 Apr | 2 Aug | 28 Aug | |
| 10 Apr | 7 Aug | | |
| 12 Apr | 14 Aug | | |

New Forest Centre, Lyndhurst, SO43 7NY





Ramble with a Ranger - You'll never walk alone
Sat 21 Apr, 10am - 12pm,
Appleslade car park, SU184093

Join our Volunteer Rangers to discover more about the New Forest. Get your walking boots on and get healthy in the company of like-minded people. Join us for an optional pub lunch after the walk.
 £6 per person. 18 years +. 4 miles. Dogs welcome on leads. Please book online at: forestry.gov.uk/newforestevents
 Enquiries: 0300 067 4601

MAY

Discovery trail at Bolderwood
Sat 26 May - Sun 3 Jun,
10.30am - 3.30pm,
Bolderwood, SU242086
 See Fri 30 Mar for details.

Wild Wednesdays
Wed 30 May, 10.30am - 4pm,
Reptile Centre, SU271071
 See Wed 4 Apr for details.

Wild about ponies
Thu 31 May, 1pm - 2pm,
Hatchet Pond, SU369017
 See Thu 12 Apr for details.

JUNE

National Volunteers' Week New Forest litter pick
Sat 2 Jun, 10am - 12pm,
Bolton's Queens, SU305082

As part of National Volunteers' Week, please come and join us to help clean up our beautiful forest. All equipment will be provided.
 Free. Suitable for all ages. Dogs not suitable on this event. No booking required. Enquiries: 0300 067 4601

Sunset Safari
Sat 9 Jun, 8.30pm - 10pm,
Blackwater, SU268047

A dusk walk to experience New Forest wildlife as the sun sets. Listen for nightjars, keep your eyes peeled for bats and watch out for deer.
 £10 per person. 10 years +. 2 miles. Dogs not suitable on this event. Booking essential. Please book online at: forestry.gov.uk/newforestevents
 Enquiries: 0300 067 4601

Festival of Lepe
Sat 9 & Sun 10 Jun, 10am - 4pm,
Lepe Country Park, SO45 1AD

Join staff & volunteers for a festival to mark the end of improvement works that have taken place over the last 18 months as we celebrate with fun activities for all, food, drink, music and more!
hants.gov.uk/lepe

Wild about ponies - "My Haunt"
Sat 23 Jun, 1pm - 2pm,
Tilery Road, SU308032
 See Thu 12 Apr for details.

JULY

Sunset Safari
Wed 11 Jul, 8.30pm - 10pm,
Blackwater, SU268047
 See Sat 9 Jun for details.

Discovery trail at Bolderwood
Sat 21 Jul - Sun 2 Sep,
10.30am - 3.30pm,
Bolderwood, SU242086
 See Fri 30 Mar for details.

Wild Wednesdays
Wed 25 Jul, 10.30am - 4pm,
Reptile Centre, SU271071
 See Wed 4 Apr for details.

AUGUST

Wild Wednesdays
Wed 1 Aug, 10.30am - 4pm,
Reptile Centre, SU271071
 See Wed 4 Apr for details.

Wild about ponies
Thu 2 Aug, 1pm - 2pm,
Bolton's Bench, SU303081
 See Thu 12 Apr for details.

Fun in the Forest
Thu 2 Aug, 10am - 3pm,
Wilverley inclosure car park,
Brockenhurst, BH25 5TZ
 Catch up with the New Forest Rangers for a host of activities such as bug hunts, scavenger hunts, colouring and crafts. Wear old clothes and be ready for forest fun!
 No booking required. Suggested donation £1/child. Suitable for all ages (children must be accompanied by an adult). Enquiries: 01590 646600

Heathlands of the New Forest
Mon 6 Aug, 10am - 12pm,
Shatterford car park, SU348063

Join our Open Forester and discover how both modern and traditional management techniques have helped shape the heathlands.
 £10 per person. 12 years +. Dogs not suitable on this event. Booking essential. Please book online at: forestry.gov.uk/newforestevents
 Enquiries: 0300 067 4601

Discover the New Forest
Tue 7 Aug, 2pm - 3.30pm,
Blackwater, SU268047
 See Tue 31 Jul for details.

Marine Wonders
Thu 7 & Wed 8 Aug, 10am - 4pm,
Lepe Country Park, SO45 1AD
 Come to Lepe for two days of marine-themed fun: the ever popular seashore safaris, arts and crafts, storytelling and much more.
 Free event, donations for craft activities welcome. No booking required. Parking charges apply (free for blue badge holders). Suitable for all ages. Enquiries: 02380 899108

Wild Wednesdays
Wed 8 Aug, 10.30am - 4pm,
Reptile Centre, SU271071
 See Wed 4 Apr for details.

Wild about ponies
Thu 9 Aug, 1pm - 2pm,
Whitefield Moor, SU274026
 See Thu 12 Apr for details.

Summer Wild Play Day
Tue 14 Aug, drop in between
10am - 3pm, Whitefield Moor,
Brockenhurst SO42 7QB

Discover fun ways to explore, play and get creative in the outdoors, from your back garden to the New Forest woods, streams and heaths. Create some forest art, sail leaf boats, explore with scavenger hunts and much more. Wear old clothes and don't forget your wellies!
 Suggested donation £1/child. Parking charges apply. Suitable for all ages (children must be accompanied by an adult). No booking required. Enquiries: 01590 646600



Discover the New Forest
Tue 14 Aug, 2pm - 3.30pm,
Bolderwood, SU242086
 See Tue 31 Jul for details.

Wild Wednesdays
Wed 15 Aug, 10.30am - 4pm,
Reptile Centre, SU271071
 See Wed 4 Apr for details.

Beaulieu Road Special
Thu 16 Aug 1pm - 2pm, Beaulieu
Road sales yard, SU350063

A unique opportunity to explore Beaulieu Road sales yard with a New Forest Ranger. Learn about New Forest ponies and other livestock which live on the forest. Come along to a fun, free information session and learn all the answers to your questions about the four-legged icons.
 Free. Suitable for all. 1 mile. Dogs welcome on leads. No booking required. Enquiries: 0300 067 4601

Fun in the Forest
Thu 16 Aug, 10am - 3pm,
Puffles Bridge car park,
Brockenhurst, SO42 7QB
 See Thu 2 August for details.

Discover the New Forest
Tue 21 Aug, 2pm - 3.30pm,
Blackwater, SU268047
 See Tue 31 Jul for details.

Wild Wednesdays
Wed 22 Aug, 10.30am - 4pm,
Reptile Centre, SU271071
 See Wed 4 Apr for details.

Wild about ponies
Thu 23 Aug, 1pm - 2pm,
Hatchet Pond, SU369017
 See Thu 12 Apr for details.

Fun in the Forest
Thu 23 Aug, 10am - 3pm,
Anderwood car park, Lyndhurst
Road, Burley, BH24 4HS
 See Thu 2 Aug for details.

Discover the New Forest
Tue 28 Aug, 2pm - 3.30pm,
Bolderwood, SU242086
 See Tue 31 Jul for details.

Wild Wednesdays
Wed 29 Aug, 10.30am - 4pm,
Reptile Centre, SU271071
 See Wed 4 Apr for details.



SEPTEMBER

Lymington-Keyhaven Nature Reserve Open Day
Sun 16 Sep, 10.30am - 4pm
Lymington-Keyhaven Nature Reserve, SO41 8AE

Come to Hampshire's premiere coastal reserve and enjoy the spectacle of birds as they stop off on their annual migrations. Stalls, crafts, guided walks, family activities, wildlife viewing and more.
 This is a joint event between Hampshire County Council, Hampshire and the Isle of Wight Wildlife Trust and the New Forest National Park Authority.

OCTOBER

New Forest Walking Festival
Sat 13 - Sun 28 Oct, locations
across the New Forest
 See page 5 for details.

Explorer Walk
Tue 16 Oct, 10am - 1pm,
Beaulieu Road, SU350063
 Enjoy a three-hour guided walk with an introduction to commoning.
 £6 per person. 15 years +. Dogs welcome on leads. Booking essential. Please book online at: forestry.gov.uk/newforestevents
 Enquiries: 0300 067 4601

A Walk on the Wild Side
Wed 17 Oct, 10am - 2pm,
Wilverley Plain car park, SU253010

Join a Forestry Commission Volunteer Ranger on a 7-mile walk and learn more about the roles of the Verderers, Agisters and Keepers and the management of our four legged architects - the NF ponies.
 £6 per person. 12 years +. 7 miles. Dogs welcome on leads. Booking essential. Please book online at: forestry.gov.uk/newforestevents
 Enquiries: 0300 067 4601

Autumn in the Forest
Sun 21 Oct, 9.30am - 2pm,
Eyeworth Pond, SU228146
 Join Forestry Commission Volunteer Rangers on this autumnal walk to savour the colours, sights and sounds of the forest at this special time of the year.
 £6 per person. 16 years +. 6 miles. Dogs not suitable for this event. Booking essential. Please book online at: forestry.gov.uk/newforestevents
 Enquiries: 0300 067 4601

Autumn Wild Play Day
Wed 24 Oct, drop in between
10am - 3pm, Holmsley Campsite,
Forest Road, Burley, BH23 8EB
 See Tue 14 Aug for details.
 Suggested donation £1/child. Parking charges apply. Suitable for all ages (children must be accompanied by an adult). No booking required. Enquiries: 01590 646600

Autumn through a lens
Thu 25 Oct, 10am - 3pm,
Anderwood car park, SU249056
 A gentle 4-mile walk with lots of opportunities to capture the beautiful autumn scenery.
 £6 per person. 12 years +. Dogs not suitable for this event. Booking essential. Please book online at: forestry.gov.uk/newforestevents
 Enquiries: 0300 067 4601

Family Fungi Fun
Mon 22 - Fri 26 Oct,
10.30am - 4pm,
Bolderwood, SU242086
 A week of fungi fun. Find out all about these little rotter's fungi world. Activities for all the family. Find us at the Bolderwood unit.
 Free. Suitable for all ages. Dogs welcome on leads. No booking required. Enquiries: 0300 067 4601



Watching the sunset over the Needles

> Pure Island Happiness. Endless ways to find it. One way to get there.

Isle of Wight

Escape to the Isle of Wight with Red Funnel and discover your Pure Island Happiness.

Enjoy everything from stunning scenery to rich heritage, relaxation and delicious local produce.

Perfect for a day trip from the New Forest, or for a longer visit.

So leave the mainland behind and head to happiness with Red Funnel Ferries.

redfunnel.co.uk
 0844 844 9988*



*Calls to this number cost 7 pence per minute plus your service provider's access charge. A £5 handling charge applies to telephone bookings.

There's nothing like...

Beaulieu

National Motor Museum
Palace House & Gardens
World of Top Gear
Beaulieu Abbey

beaulieu.co.uk

Beaulieu | New Forest | Hampshire | SO42 7ZN
01590 612345 Open 10am daily Free Parking

VOTED DORSET'S TOP FAMILY ATTRACTION

primary times READER STAR AWARDS 2017 AS CHOSEN BY READERS
primary times READER STAR AWARDS 2017 AS CHOSEN BY READERS
primary times READER STAR AWARDS 2017 AS CHOSEN BY READERS

FAMILY ATTRACTION WINNER IN DORSET
OVERALL WINNER IN DORSET
PARTY VENUE / ENTERTAINER WINNER IN DORSET

25% off admission!
quote 'new forest'

ADVENTURE WONDERLAND
BOURNEMOUTH
01202 483444
www.adventurewonderland.co.uk

Quote 'NEW FOREST' at the Ticket Booth and receive 25% off single person admission. Offer cannot be used in conjunction with any other offer or discount. Terms and Conditions apply. See website for details.

New Forest Adventures

NEW FOREST ACTIVITIES

Canoeing & Kayaking
Archery
Battlefield LIVE
Group Activities
Cycle Hire and more!

Guide to The New Forest
Jam packed with helpful tips and places to visit, it's the perfect tool to plan your trip to The New Forest.

Download your copy from our website!

100% SATISFACTION GUARANTEE

The Stunning New Forest National Park

OPEN ALL YEAR ROUND | 01590 612377
WWW.NEWFORESTACTIVITIES.CO.UK

NEW for Easter

TROPICAL house

FREE Guide book with this advert! Book Tickets at marwell.org.uk

SO21 1JH. Expires 31.10.18. Conditions apply. Entrance payable. Reg. charity no. 275433. Sloth © shutterstock.com/kungverylucky

New Forest wildlife park

Two adventure playgrounds!

amazing animals

One acre of adventure playground fun!

Open all year round
Café and Gift Shop
Nature Trail

- 4 species of Otter
- 12 species of Owls
- Deer • Lynx
- European Wolves
- Bison • Wild Boar
- Wallaby
- Foxes • Polecats
- Scottish wildcat

Visit our website **023 8029 2408** | Deerleap Lane, Near Ashurst, Southampton, SO40 4UH
www.newforestwildlifepark.co.uk

Tropical Butterfly House open Easter to September

NEW FOREST CENTRE
LYNDHURST

FREE ENTRY

Visit the New Forest Centre and discover the history, traditions and wildlife of this amazing area.

Includes the New Forest Museum, Exhibition Gallery, Reference Library, Gift Shop & Café.

Holiday Activities
Learn about the New Forest and have fun at our Family Discovery Days. Pick up our leaflet or visit our website to find out what's on.

Open Daily
10am - 5pm 30 Mar to 28 Oct (10am - 4pm at other times). Last Museum entry 30 mins before closing. See our website for Library opening times.

023 8028 3444
www.newforestcentre.org.uk
Lyndhurst, Hampshire SO43 7NY
Reg Charity No: 279373

SHOP
REFERENCE LIBRARY
CAFE
GALLERY
MUSEUM

Map Reading Courses

NEW FOREST NAVIGATION

One and two day map reading courses
Suitable for complete beginners or those looking to improve skills.

Weekend, midweek and bespoke courses for one to one, couples and groups.

All weather fun!
National Navigation Award Scheme
Courses available all year

newforestnavigation.co.uk

REGENT CENTRE

cinema • theatre
live music • concerts
live satellite broadcasts
art exhibitions

Open daily from 10am

with the
Christchurch Information Centre

High Street, Christchurch, Dorset, BH23 1AS
01202 499199 | www.regentcentre.co.uk

enjoyEngland OFFICIAL PARTNER

10% off*

Bike hire from the heart of the New Forest

Cyclexperience, Brockenhurst 01590 624808
Forest Leisure Cycling, Burley 01425 403584
Woods Cyclery, Lyndhurst 023 8028 2028

Quote 'Essential 18' when booking

*Not valid on Bank Holidays & School Holidays

ASHURST NEW FOREST

LONGDOWN Activity Farm

LOTS OF FRIENDLY ANIMALS TO MEET

OPEN DAILY
10 FEB TO 28 OCT

10am to 5pm
(Closed at 4.30pm in October)

Get hands-on with our full schedule of fun activities, which run throughout the day. Meet friendly farm animals. Plenty of indoor & outdoor play areas. Farm produce shop and gift shop.

Tel. 023 8029 2837

FOR EVENT DETAILS & MUCH MORE CLICK ONTO:
WWW.LONGDOWNFARM.CO.UK

IT'S A REAL HANDS-ON EXPERIENCE!



Spring brings the arrival of foals.

One of the great attractions of the New Forest is undoubtedly the ponies. Although the new-born donkeys and ponies look cute, avoid coming in between a mother and its foal, as they are very protective of their young.



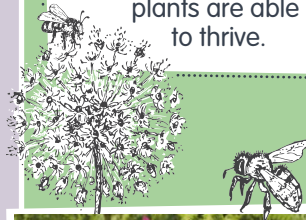
Rare birds beneath your feet!

The heathlands are home to birds with superb camouflage that take their chances nesting on the ground. You can help these birds thrive by keeping to the main tracks until July. If you have a dog, keep it on the tracks too – if necessary use a lead.



In the summer you might spot a harvester...

mowing bracken on areas of heathland, by removing this potentially invasive species other plants are able to thrive.



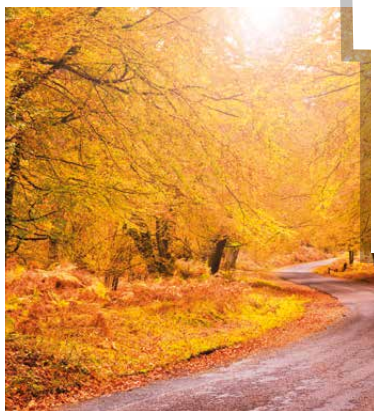
Woodland 'rides' (open pathways) allow access for machinery but are also important for recreation and conservation. An active programme of ride restoration has seen the re-establishment of forest plants and an increase in insects, small mammals and birds of prey over recent years.



A year in the New Forest



The New Forest may seem like a wild place, but its diverse habitats have been created by a long history of grazing and management. Today, the Forestry Commission and the National Park Authority look after this special place...

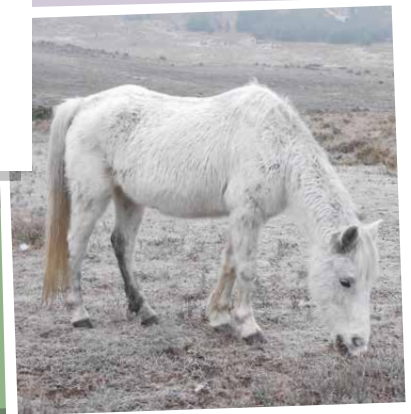


Autumn colours

October is the time of year when red, fallow and sika deer start rutting and the golden autumn colours of the forest look their best.



Open heaths need to be managed to control the vegetation and provide good habitats for birds and other wildlife, as well as grazing for ponies, cattle and deer.



Winter burning

Today, work by the Forestry Commission includes controlled burning, gorse cutting and bracken harvesting as well as restoration of valley mires and removing invasive species, such as rhododendron.



A working forest

The forest industry in the New Forest dates back to the first inclosure in 1483, timber being produced was of national value for the ship building industry. Today, timber production is centred on 9,000 hectares which are inclosed from grazing animals, producing 50,000m³ of timber each year.

